

Gospel Grapevine

The newsletter of St. Alban's Episcopal Church, Edmonds, WA

March 2008

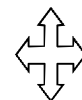
Holy Week Schedule

| | |
|---------------------------------------|------------------------------------|
| Palm Sunday | March 16 |
| Liturgy of the Palms & Holy Eucharist | |
| 8:00 a.m. | Holy Eucharist, Rite I |
| 10:30 a.m. | Holy Eucharist, Rite II |
| Monday & Tuesday | March 17, 18 |
| 7:00 p.m. | Evening Prayer |
| Wednesday | March 19 |
| 7:00 p.m. | Tenebrae (a quiet evening service) |
| Thursday | March 20 |
| 7:00 p.m. | Holy Eucharist, Foot Washing |
| 8:00 p.m.—noon Friday | Prayer Vigil |
| Friday | March 21 |
| 12-3:00 p.m. | Stations of the Cross |
| 7:00 p.m. | Solemn Liturgy |
| Easter Sunday | March 23 |
| 8:00 a.m. | Holy Eucharist, Rite I |
| 10:30 a.m. | Holy Eucharist, Rite II |



Also Inside:

| | |
|-----------------------|----|
| Message from Fr. John | 2 |
| Endowment Fund | 3 |
| Malaria Nets | 4 |
| Bits & Pieces | 5 |
| Inner Healing | 7 |
| Financial Update | 8 |
| World Day of Prayer | 9 |
| Calendar | 10 |



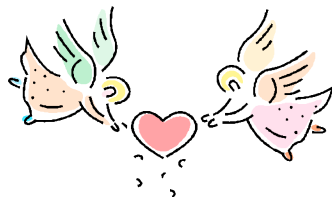
St. Alban's Episcopal Church

21405 82nd Place West
Edmonds, WA 98026

Phone: 425-778-0371
Fax: 425-778-1583
Email: staedmonds@aol.com
Website: www.stalbansedmonds.org
Newsletter: nancykitty@earthlink.net

Sunday Worship

8:00 a.m. Holy Communion, Rite I
10:00 a.m. Nursery Open
10:30 a.m. Sunday School
10:30 a.m. Holy Communion, Rite II



Thank you!

Kären Ford & Connie Forsberg would like to thank everyone who contributed their gifts of time, food, and money to the Celebration of a New Ministry for Fr. John and Sarah Leech. It was a wonderful opportunity to welcome Bishop Greg, Marti and Austin Rickel to our parish as well. Everyone's efforts ensured we had a special day. And we were worried we wouldn't have enough food!?!

It was great to have many old and new friends in attendance. St. Alban's really is a "welcoming" parish. Thank you from Kären & Connie.

From the Rector's Study

Looking Beyond Good Friday



Looking beyond Good Friday, at the end of this season of Lent, requires more than worldly eyes. The historians of the Jesus Seminar, when they voted on the actions of Jesus, culminating in the events of Holy Week, could go no further than his death. He was crucified

under Pontius Pilate.

Then what happened? What happened after he died? What happens after you die?

The answers are married, so closely are they related. Jesus became the first-born from the dead, the first one to experience resurrection. Looking at him, and at his appearances to the disciples, to Mary of Magdala and Joanna and to Peter and John and to many others, we see what resurrection life looks like. We know that he was raised, and we know that he continues to lead us, both in this life and beyond, as we approach the throne of God.

The events of Holy Week, and the actions of Jesus, beginning with Palm Sunday's ironic procession – holding up a mirror to the false pretensions of worldly glory of the powers of Empire, confronting entrenched interests even in the precincts of the Temple, holding the Passover meal with his friends,

facing a jury-rigged midnight tribunal, and accepting the death of a common criminal, then passing through the tomb: these events, leading up to Easter, emerge in their full significance only when we look beyond the Tomb, to the first day of the week, when the women carrying spices and ointments went to pay their last respects to their dear Friend. There, where they looked for death, they found life: he is not here; he is *risen!*

As I write this we are still in the season of penitence and preparation, of Lent, and, with intervening celebrations, it is during this season that you will receive this newsletter. We will, on occasion, look back on events of Jesus' life – the wedding feast at Cana, notably – that foreshadow the joy of Easter, the hope of glory, and the love manifest in the Spirit.

In the meantime, however, we will prepare: we will look, at ourselves, our community, our nation and our world, and we will see there the need for God, the need for his presence among his people, the need for his voice and his hands to show his love to the world. We will see the need for his church to become ever more fully the people of God. And, even as we anticipate that last bite of darkness at the end of winter – Good Friday's solemn black – we will know that beyond it comes the dawning of the new day, the Lord's Day.

See you there. Father John



Pictures of Father John and the Celebration of a New Ministry are now available for viewing at http://picasaweb.google.com/Tousanne2/Celebration_20080209StAlbansEdmonds.

Remember St. Alban's Endowment Fund In Your Estate Planning and Will

In January the St. Alban's Planned Giving Committee sent a letter to parishioners sharing information about our Endowment Fund, which was approved by the Vestry last year. Along with the letter you received an informative brochure entitled "The State Has Made Your Will."

The recent letter and the brochure are part of the program to help with planning for organizing our estates and memorials, and also to encourage members to consider the St. Alban's Endowment Fund as we make our estate plans and create or update our wills.

As you may have already heard, the Planned Giving Committee has developed an Endowment Fund which was approved and enacted by the Vestry. One of the goals of this committee is to continue to use Diocesan and other resources to help inform all of us about how best to proceed with these important matters.

Another goal is to make sure that everyone in our parish is aware of the importance of having a will and to have access to the resources needed to create and revise a will. In the coming months we will be sending you more informative brochures about why a will is important, who should have a will, when you should update your will, and things you should consider when planning your will.

If you haven't already done so, we encourage you to take a few minutes to read the brochure sent to you last month. Regardless of whether or not you are interested in making a planned gift to the church, that brochure and other brochures that you will receive later contain valuable estate planning information that will help you to ensure that your wishes are clear and that your family and loved ones are protected.

This first brochure makes two major suggestions: First that your family and loved ones will be better able to cope with life when you die if you outline in a legally-recognized manner what you want done with your assets. A legal will is one of the best ways to be certain that your wishes are met. The second point, which you may not have considered, is including a bequest in your will. A bequest is a wonderful way for you to continue giving to St. Alban's beyond your lifetime.

In addition to these brochures, the Planned Giving Committee will be offering other resources to help you get started with creating or updating your will. In the future we will host a Wills Awareness Seminar, which will provide information on the benefits of making a will, the legal aspects of a will, and some of the giving opportunities available through a will --something that more than half of adults neglect, to the disadvantage of their own families and the churches they support.

We will also be sharing additional information with you about the St. Alban's Endowment Fund and the Legacy Society. You will learn how parish members who choose to give to the Endowment Fund can become members of the Legacy Society, and what that means for you.

Please continue to watch your mail, the church newsletter and also Sunday bulletins to learn more about these programs and other informative events coming up. Please feel free to contact any member of the Planned Giving Committee if you have any questions about how you can contribute to the Endowment Fund. We welcome your questions, comments and suggestions.

The Planned Giving Committee
Maryellen Young, Chair, 425-776-2461
Daisy Beach, Treasurer, 425-776-3791
Dan Mullene, Secretary, 425-776-8258
Barbara Lagozzino, 425-774-9265
Reilly Mannery, 206-542-1371

*A legal will is one
of the best ways
to be certain
that your wishes
are met.*



Malaria Net Challenge

Give a net. Save a life.

Did you realize that over 300 million people a year contract malaria, with 1 million of them dying, most of them African children? Yet by sleeping under a malaria net, children and adults are protected from the mosquitoes which cause malaria. Episcopal Relief and Development (ERD), has created a NetsforLife program. For a donation of \$12 you can provide a net. This donation includes the cost of distributing the nets, educating each person on how to use the net, and follow-up later to ensure the nets are being used, and used properly. All that for \$12 for a net which lasts 5 years.

NetsforLife is a partnership to control and prevent malaria in Sub-Saharan Africa. This three-year program, currently active in eight countries, is working with local Anglican churches and ecumenical organizations in 16 countries by 2008. Thus far, the program has distributed 213,000 nets. It is funded by private individual donors, churches, the Starr Foundation, the Coca-Cola Africa Foundation, the ExxonMobil Foundation, and Standard Chartered Bank.

*For a donation
of just \$12 you
can provide
a net.*

Bishop Greg and Bishop Nedi are asking each person in our diocese to buy one malaria net. By next convention the goal is to buy one malaria net per communicant--that's 33,000. This challenge has been embraced by many parishes and we are 1/3 of the way to our goal having "sold" over 9,500 nets.

Each net costs just \$12--that's one dollar a month, or \$.25 a week that we can give to save a life. From the offering taken at the Celebration for New Ministry on February 9, 2008 is going to purchase one net for each of our Sunday School children. Here's information on how everyone can participate.

There are two ways to purchase a net:

- Pick up a form in the church entryway. Fill out the form and return it to the church with your check payable to St. Alban's. Note that it is for "NetsforLife." You will receive a gift card in response to your contribution. If you'd like to give your gift in someone's name, be sure to indicate that your contribution is for a gift so that the card will be sent to you so that you can mail the gift card to the person.
- Make an online donation at www.er-d.org. Look for the "Ways to Donate" link, select "Donate Now," then in the pull-down menu choose "Malaria Fund/NetsforLife." (maybe your employer will match your donation).

Bits & Pieces—

▼ *Community Visibility*

St. Alban's runs an advertisement in *The Beacon* which costs \$20 per month. We also advertise in *The Herald* at Christmas and Easter time in conjunction with several churches in the area. Our portion of this advertisement for 2008 will cost \$240. When planning the budget for 2008, the Vestry allotted \$150 for advertising, which means we are a little short for the year. We are asking parishioners to consider donating funds to cover this expense for this year.

With our ad in *The Beacon* we will ensure we are listed in community publications as an Episcopal church in Edmonds. In the past we were not listed at all, which gave the community the impression that the only Episcopal church in Edmonds was St. Hilda's St. Patrick's because they were listed. Maintaining an ad in the local paper is one way to keep our name and location before the public.

If you are able to assist in this way, please note on your check that your donation is for advertising. If you have any questions, call Susie Nichols, 425-771-7025. Thank you for your help with this!

▼ *Happy Birthday!*

Congratulations to Thelma Delong, who will celebrate her 97th birthday on March 21!

▼ *Website*

Our website now includes a blog and a slide show, which we will add to as time goes on. Check it out!

▼ *Hands On Activities*

The next Hands On meeting will be Tuesday, March 4th at Barbara Lagozzino's (857 Walnut St., Edmonds). If you are interested in learning more about the Hands On Committee and upcoming activities, please consider joining us. Recent activities have included a very successful pasta dinner for the Compass Center on January 27th headed by our own chef, Dan Mullene. Thanks to those of you who donated food or money for this event. We also handed out food at the North Seattle Food Bank on February 23rd. We are planning a retreat, to be led by Sallie Shippen on Friday evening, March 28th and Saturday, March 29th including some visioning about where we want to go with our Hands On ministry. If you are interested in participating with Hands On, please contact Barb Lagozzino, 425-774-9265 or Maryellen Young, 425-776-2461.

▼ *Lenten Soup Suppers*

The Lenten Soup Suppers will continue on March 5th and 12th beginning at 6:00 p.m. with evening prayer.

▼ *Prayer Beads*

Prayer beads will be held on Thursday, March 6th. Prayer beads will also cover the Watch at 9:00 p.m. on Maundy Thursday, March 20th. There will be a prayer bead prayer at the middle of the hour with quiet meditation before and after. Beads will be available if you do not have them.

Inside the Vestry—

from Carrie Cone, Sr. Warden

The Vestry met on Thursday, February 7. Those present included Vestry members: John Bee, Carrie Cone, John Greenlaw, Reilly Mannery, Phil McClelland, Barbara McLain, Erin Munday, Shirley Wilson, Gaylord Sisk, and the Rev. John Leech. Clerk Darla Lane was also in attendance. Guests included Treasurer Chris Greenlaw, who gave a January financial report, and members of the Planned Giving Committee, who made a presentation about our church's endowment funds and our Planned Giving program.

Actions taken at the meeting included: approving the installation of official Internet access to the church in accordance with our contract with the Rector. This will primarily be funded for the remainder of the year by a special gift, dedicated to this effort, and will become a line item in future budgets. The opening of a professional expense account, funded by honoraria, was approved, again in accordance with the contract signed with our new Rector. Advertising has become a major expense and one that could not be fully funded in this year of tight budget. The Vestry decided that we would continue to advertise regularly in the Edmonds Beacon and jointly with other local church for Easter and Christmas, and we would continue the ad in the Yellow Pages. A Vestry member agreed to raise the additional funds needed to do this (approx. \$450) beyond what is budgeted in 2008. We would, however, drop the Herald/Enterprise for now unless additional funds became available. A special thanks to all those who supported this effort last year.



Welcome—New Music Director!

from Sally Shippen for JoAn Andenes

My name is JoAn Andenes and I am your new organist and music director. I am looking forward to being with you at St. Alban's starting the first Sunday in March. I really enjoyed playing the organ for Fr. John's Celebration of New Ministry. It was an awesome service!

I am coming to you from St. Luke's in Ballard where I have been Organist and Music Director for the past ten years. Prior to that, I was at St. George's in the Lake City area of Seattle for 16 years. Church music is my passion. I began my studies as a teenager and my teacher was an Episcopal priest who was also a graduate of the Eastman School of Music. I have been the organist in various churches, mainly Episcopal and

Lutheran, for all of my adult life. I also worked for Group Health Cooperative, as a quality management coordinator and analyst, for 26 years.

I want to meet you and learn about you-- what your favorite hymns and songs are, so that we can sing them on a regular basis. At the same time, I would like to teach new music, but I can't do this without your help. If you like to sing or if you play a musical instrument and want to share your talents, please let me know. Perhaps we could do something special for Easter. There's still a little time left in Lent! I'd love to train some cantors to lead responsorial and psalm singing. All this takes is a clear voice, a good sense of rhythm and the ability to stand up in front

of the congregation! Cantors are liturgical song-leaders and they provide an invaluable service in congregational worship! St. Augustine said, "The one who sings prays twice."

As the church we possess an enormous and wonderful treasure chest of hymns, songs, chants, psalms, and canticles. In singing them, by adding our voices, we make these songs our own. We join the song of all creation. As the 19th century hymn writer, Robert Lowry, wrote, "Since Christ is Lord of heaven and earth, how can I keep from singing?"

By the way, the correct pronunciation for JoAn's last name is *Ann dee' ness* (with the accent on the second syllable).

Sharing Christ's Love

from a parishioner

Are you one of our St. Alban's members who have been wondering what those baskets on the floor in the narthex is for? Or are you one of those who already know they are for collecting food that is brought to the church, and which goes to the Edmonds food bank, to be distributed to our neighbors who are hungry and in need of some help?

As someone who, like many of us, has been through some hard times and has been the beneficiary of much-needed assistance from kind and generous people, I want to suggest to you, my fellow St. Albanites, that you pay attention to those baskets. The food staples you bring to church can make a huge difference to a family or an individual that lives right here in our city, and who is trying to make what's on the pantry shelves last to the end of the month.

The next time you go shopping; why not plan on buying something for the baskets? Food banks need staples, like

cereal, pasta, rice, dried milk, canned meat and fish, peanut butter, baby food, cans of soup, hearty meals, and fruit. They need things in sizes that are manageable, since single people often come in for help, along with families. Cans with pop tops are good, because not every food bank client has access to a can opener. Disposable diapers and dry dog food are usually welcome too. Things like pudding and Jell-O mixes, cake mixes, and one pound boxes of sugar are wonderful, for a treat.

It's not helpful to donate food that is out of date or already opened. If you wouldn't eat it yourself, just throw it out. Otherwise, food bank volunteers will have to do that for you.

When you shop at a "big box" type of store, consider buying those packages of



many cans or boxes that are bundled together, and which are very reasonable in cost. Keep half for yourself, and bring the other half to church with you on Sunday. If you're a coupon clipper, check out the really good bargains, even if they aren't something that you and your family particularly enjoy eating. If there are deals on items that are nutritious, keep well, and hopefully have protein in them, use the coupons and buy for someone who isn't going to get by that month by without the food bank.

Please keep in mind that many of the clients who frequent food banks are physically or mentally disabled, are elderly, or have small children. Many also fit into that sad category known as "the working poor." Rather than judge them, we can help them with food, one of the basic needs of life. The Gospel calls us to do that.

So please, look for those baskets and bring something to put into them. No amount is too little; no amount is too much. God bless you for sharing.

Pets have a way of working their way into our hearts and becoming enmeshed in our families. Losing one can be very hard. That's what happened with Sadie, our last dog. When she died it left a big hole in our lives. To lessen the pain, it seemed like a good idea to find another dog as soon as possible.



That's how Lilly came to live with us. The problem was that Sadie had been a well-aged English setter when we got her. She was very mellow and fit into our life style rather nicely. Lilly, on the other hand, was a puppy about eight months old when Dave brought her home. A Brittany mix, she was very pretty with her white coat and a few brown spots. What we didn't know about the breed was that they have boundless energy. No matter how much we exercised her, she still seemed to expect more. Playtime was her main activity and when she didn't get her fill, she became very mischievous.

Our dog trainer, Bow Wow Bill, came to our rescue when he suggested that we let him train her on a treadmill. So that's what we did and she became a much happier dog. She ran a half hour in the morning and a half hour in the evening. Bow Wow Bill says that "a tired dog is a happy dog." We found out that he was right. One problem solved; one more to go.

This problem started when winter began, gradually making our daylight hours shorter and shorter, until 4 p.m. became nighttime. What this did in Lilly's world was cause mass confusion. She saw dogs everywhere that looked just like her. She saw her reflection in every window. In every skylight on the roof there were puppies wanting to play. So Lilly would bark and bark. She couldn't understand why they were so illusive.

Lilly's fantasy of the dog on the roof reminds me of fears we may have that seem real to us, but are in fact without substance, like Lilly's reflection. We may fear losing our mate, our job, or

our health without any valid reason. Or even more illusive is the worry that people won't like us. I don't think anyone is exempt from these worries from time to time, but when they get out of balance or consume our thoughts and keep us from making good decisions, we are like Lilly, barking and making a lot of noise, wasting energy and accomplishing nothing.

From God's perspective, I suggest we are demonstrating that we don't trust our creator when we worry. We know intellectually that we can't change one thing by fretting, but we still seem to do it. It would make more sense to take our worries and cares to our Heavenly Father and trust Him to do what is best for us. Let's not be like Lilly barking at the dog on the roof, but instead, let's bring our cares to the Lord and find real peace.

If you would like to learn more about the Inner Healing Ministry, please call Shirley Wilson at 206-542-2944 or e-mail wilsaw@hotmail.com.

Liturgically Speaking. . .

Holy Week

The liturgy for Palm Sunday (Book of Common Prayer, page 270) marks the beginning of the most solemn period of the Church's year, Holy Week.

From the fourth century of the Christian era, the important events in the life of our Lord have been dramatized. Holy week is essentially a drama in several scenes beginning with Jesus' entrance into Jerusalem led by a crowd carrying branches of palm.

The liturgy begins with the blessing of the palms; all are invited to join the procession into the Cathedral and enter into the event that took place 2000 years ago.

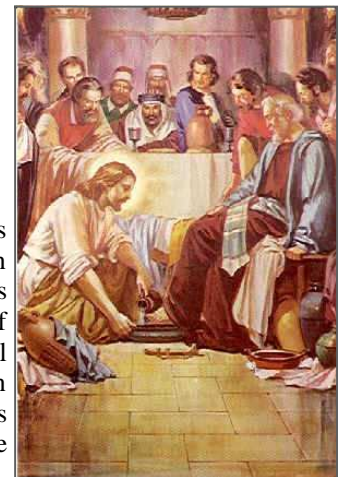
Tenebrae comes to us from the monastic tradition. It is centuries old.

In the simplest of terms, through darkness and light, it tells again the story of our redemption, inviting us to enter in to its mystery in ways that words alone cannot express.

Tenebrae, which implies "shadows," takes place on Wednesday evening. Tenebrae is a solemn service consisting of psalms, readings, and special music recalling Jesus sacrifice on the Cross for all the world. It sets the mood for the remainder of the Holy Week.

Maundy Thursday (BCP, p. 247) re-enacts the Last Supper and includes the washing of feet, a dramatic reminder of the caring servant ministry all Christians are called to perform.

From "Discovering the Treasures of the Prayer Book" by The Reverend Grant S. Carey, D.D., Canon Residentiary of Trinity Episcopal Cathedral, Sacramento, and used with his permission.



St. Alban's Financial Update

from John Greenlaw

With God's grace we have started the new year and have already been very busy. Father John's ordination was very exciting and gave us an opportunity to meet our new Bishop.

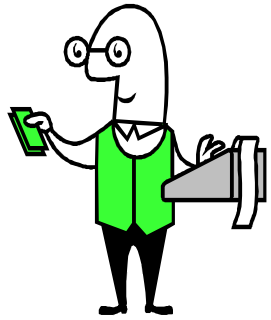
Our kickoff for Lent with the Shrove Tuesday pancake dinner was a great success, due to the organizational skills and effort of Lee Forsberg. Wednesday's Lenten soup suppers are in full swing and provide an opportunity for testing the culinary skills of fellow parishioners and enjoying fellowship together.

All of the activities and ministries of our church are fueled both by a lot of hard work and the resources made available by your contributions. Thank you so much for your continued support.

Looking back to January, our contributions and expenses were as follows:

| | January | | Act – Bud |
|------------------------|--------------|-------------|------------|
| | Actuals | Budget | Difference |
| Total Contributions | \$15,556.14 | \$14,427.37 | \$1,128.77 |
| Total Expenses | \$17,012.72 | \$16,880.01 | \$132.71 |
| Net Contrib - Expenses | (\$1,456.58) | | |

Our contributions exceeded our anticipated budget. Our expenses also slightly exceeded our expectations. The financial team will keep a watchful eye on our expenses and continue to keep making every effort to live within our means.



How to Use the Sunday Readings on a Daily Basis

David Adam, author of *The Rhythm of Life*, which forms the basis of our Lenten evening prayer services on Wednesday evenings, has a helpful suggestion for us: "One of the best preparations for Sunday worship is to use the readings for the coming Sunday throughout the week as an inspiration for prayer and intercession." Were we to use the same readings from Monday to Sunday, he suggests, when we come together on Sunday our worship would be enriched. "If possible," he urges us, "use the readings for the Sunday ahead to inspire and direct your prayers, then when we come together in worship it will be full of depth and meaning."—David Adam, *Clouds and Glory* (SPCK, 2000), p. 2-3.

The Lessons Appointed for:

| <u>March 2</u> | <u>March 9</u> | <u>March 16</u> | <u>March 23</u> | <u>March 30</u> |
|------------------|-----------------|--------------------|-----------------------|-------------------|
| 1 Samuel 16:1-13 | Ezekiel 37:1-14 | Isaiah 50:4-9a | Jeremiah 31:1-6 | Acts 2:14a, 22-32 |
| Ephesians 5:8-14 | Romans 8:6-11 | Philippians 2:5-11 | Acts 10:34-43 | Peter 1:3-9 |
| John 9:1-41 | John 11:1-45 | Matthew 27:11-54 | Matthew 28:1-10 | John 20:19-31 |
| Psalms 23 | Psalms 130 | Psalms 31:9-16 | Psalms 118:1-2, 14-24 | Psalms 16 |

As space permits we will print the lessons in the newsletter &/or you may find them on our website.

Sunday School—News From the Other Building

from Joyce Carver

The Sunday School continues to bring the love of God and Jesus into the lives of the children.

The Easter egg hunt will take place right after the 10:30 a.m. service on Easter Sunday. Youngsters through the 5th grade are welcome to participate in the fun. The older children will take part in hiding the eggs.

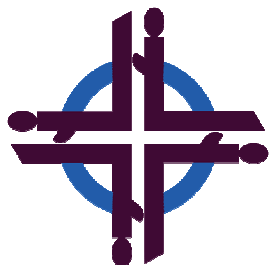
Planning ahead: Vacation Bible School is scheduled for August 11-15.

Pray for the children and their families. Pray for the teachers.

Jesus said,

“Let the little children come to me, and do not hinder them, for the kingdom of heaven belongs to such as these.”

Matthew 19:14



St. Alban's Women Invited to Participate in World Day of Prayer

from Sarah Leech

We are invited to participate in the World Day of Prayer by attending a worship service at 10:00 a.m. on Friday, March 7th, 2008 at Maplewood Presbyterian Church in Edmonds.

The event will bring together local Christian women of many traditions in an hour of praise, prayer and study on the theme “God’s Wisdom Provides New Understanding.” It will be a time to affirm our faith in Christ, hear about the joys, fears, sorrows, needs and opportunities of women in other parts of the world, be enriched by the faith experience of Christians from other cultures, and be inspired to prayerful action.

World Day of Prayer is a worldwide ecumenical movement of Christian women. Every year, women around the world observe a day of common prayer and celebration on the first Friday of March. Our collective prayers, beginning with the first sunrise on that day, follow the sun’s path around the earth, concluding at the last sunset. Women in more than 170 countries and regions participate in this movement, which brings together women from many cultures, traditions and races in closer fellowship, understanding and action throughout the year.

The women of Guyana wrote this year’s service. They invite us to rejoice with them at the astonishing beauty of God’s creation, and to call upon God’s wisdom as we journey with them to learn about Guyana’s history and cultural legacies, and its current struggles with HIV/AIDS, human trafficking, domestic violence, unemployment and lack of opportunities for young people. We will think about and respond to questions of justice and possibility, and consider the new opportunities that wisdom provides as we worship with the World Day of Prayer women of Guyana.

Maplewood Presbyterian Church is located at 19523 84th Avenue West in Edmonds. If you would like to carpool to the service on March 7th, contact Sarah Leech at (425) 672-2470. We will meet at St. Alban’s at 9:30 a.m. to drive over together. The WDPIC website is at www.worlddayofprayer.net.

St. Alban's Vestry

Carrie Cone, Rector's Warden

Phil McClelland, People's Warden

Phyllis Becker

John Bee

John Greenlaw

Barbara McLain

Reilly Mannery

Erin Munday

Susie Nichols

Gaylord Sisk

Jeannie Wells

Shirley Wilson

Darla Lane, Clerk

Chris Greenlaw, Treasurer



Staff

The Rev. John R. Leech, Rector

Doris Eaker, Parish Secretary

Donald Vollema,

Music Director & Organist

Shannon Duggan, Nursery Director

Joyce Carver, Sunday School Director

Nancy Boor, Editor, *The Grapevine*;

Webmaster

Office Hours

Monday & Wednesday

8:00 a.m.—5:00 p.m.

Tuesday & Thursday

8:00 a.m.—4:00 p.m.

The rector is in on Tuesdays, Wednesdays, and Thursdays.

Grapevine Newsletter Articles for the

April 2008 Issue:

Due March 15

Please send articles to Nancy Boor for the April issue via email at nancykitty@earthlink.net. **I can accept email messages, pictures, photos, and Word, Publisher or PDF documents only. Be sure they have a .doc, .pub, or .pdf extension on the file for text files.** Or, you may place items in the plastic holder marked “Grapevine” on the wall to the right inside the door in the Narthex.

All articles and announcements are subject to editing for brevity, space and content and require name and contact number.

Calendar—March 2008

| <u>Day</u> | <u>Date</u> | <u>Event</u> |
|------------|-------------|--|
| Wednesdays | 3/5 & 12 | Evening Prayer, Soup Supper, & Book Discussion begins at 6:00 p.m. |
| Thursday | 3/6 | Vestry @ 7:00 p.m. |
| Monday | 3/10 | Covenant Group @ 2:00 p.m. |
| Monday | 3/24 | Office Closed |



Recurring Events:

Boy Scouts:
Mondays at 7:00 p.m.
at St. Alban's

Annie's Kitchen:
Wednesdays at 5-6:30 p.m.
at Edmonds Lutheran Church

*Thought for the day—
Opportunity may knock once, but temptation
bangs on your door forever.*



St. Alban's Episcopal Church
21405 82nd Place West
Edmonds, Washington 98026

RETURN SERVICE REQUESTED

**NON PROFIT ORG
US POSTAGE
PAID
PERMIT #1003
LYNNWOOD, WA**

*If you do not want this newsletter, please mark it
REFUSED and return it to the Postman unopened.*